



Vertex Water Features

Lake Aeration Systems & Floating Fountains

F L O A T I N G F O U N T A I N S



TWOTIER™

The wide spreading display of the TwoTier series creates a broad feature that will beautifully fill any lake scene. The all-brass display head produces heavier floral sidejets that arch up and out, making it a highly visible pattern in both daylight and when lit at night.

Powered by a U.L. listed heavy-duty submersible turbine pump, the TwoTier standard equipment includes a complete U.L. listed control panel.

All fountain components are fully waterproof and made of the finest corrosion resistant materials to provide years of dependability and high performance.

FEATURES

FLOTATION

- ◆ U.V. resistant rotocast unit
- ◆ Four seamless, water-tight compartments for ballast
- ◆ Brass fillplugs
- ◆ Five-year warranty

CONTROL PANEL

- ◆ U.L. listed per National Electrical Code
- ◆ Weatherproof steel enclosures

CABLE

- ◆ STW-A rated, U.L. listed underwater cable

PUMPS

- ◆ High performance submersible turbines provide years of dependability and service
- ◆ Franklin stainless steel sealed motors

NOZZLE

- ◆ Brass/bronze precision machined TwoTier nozzle

CORROSION RESISTANT

- ◆ Cast brass/bronze nozzle
- ◆ Rotocast float
- ◆ Stainless steel frame and fastenings
- ◆ Bronze/copper lights

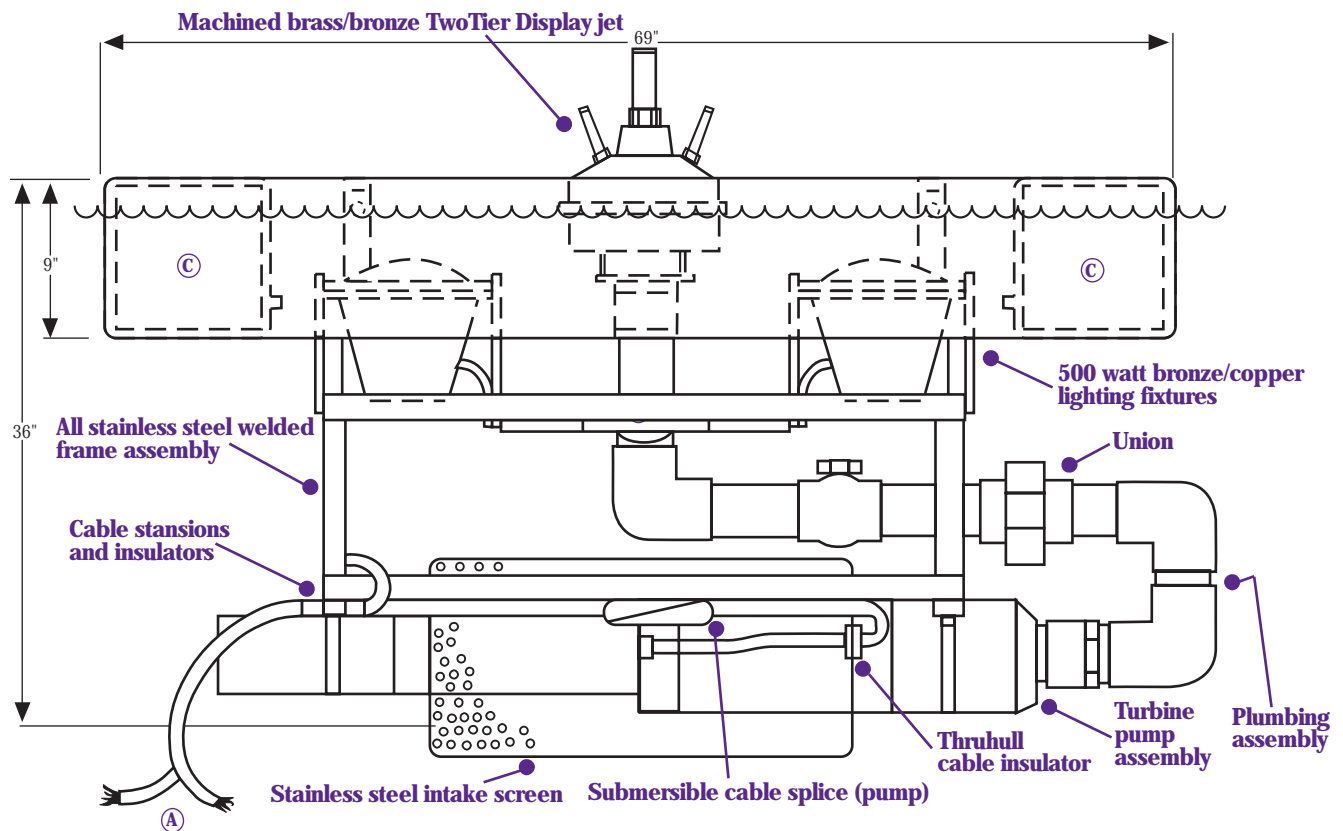
LIGHTS

- ◆ Cast bronze/copper housing
- ◆ Stainless steel brackets
- ◆ Neoprene gaskets
- ◆ Tempered lenses
- ◆ Bronze/stainless steel lens protectors

BENEFITS TO LAKE

- ◆ Aesthetics — beautifies waterway
- ◆ Increases property value and quality of community
- ◆ Adds decor to community
- ◆ Assists in aeration of lake system, aiding in fish dynamics
- ◆ Through agitation, prevents aggregation of planktonic algae on the surface and helps in reduction of mosquito larvae

TWOTIER™



| | |
|---|---|
| A | STW-A submersible cable (pump & lights) |
| B | Bronze submersible junction box (lights) |
| C | (4) separate ballast compartments with brass fill plugs |

DISPLAY SPECIFICATIONS

| HP | CENTER HT | SIDE HT | # SIDE JETS | # LIGHTS | TOTAL WATTAGE | AVAIL. PHASE |
|-----|-----------|---------|-------------|----------|---------------|--------------|
| 1 | 15' | 7' | 15 | 1 | 500w | 1 |
| 2 | 20' | 9' | 20 | 2 | 1000w | 1 |
| 5 | 25' | 12' | 20 | 3 | 1500w | 1,3 |
| 7.5 | 30' | 15' | 20 | 3 | 1500w | 1,3 |
| 10 | 40' | 20' | 20 | 4 | 2000w | 1,3 |

LIGHTING SPECS

| Total Wattage | 500 | 1000 | 1500 | 2000 | 2500 | 3000 | 3500 | 4000 |
|---------------|-----|------|------|------|------|------|------|------|
| AMP Draw | 5 | 10 | 15 | 20 | 25 | 30 | 35 | 40 |

PUMP AMPERAGE (208V MOTORS AVAILABLE)

| HP | 230v1Ø | 230v3Ø |
|-----|--------|--------|
| 1 | 7 | - |
| 2 | 14 | - |
| 5 | 28 | 17 |
| 7.5 | 42 | 25 |
| 10 | 51 | 32 |

Because of the electric equipment involved, floating fountains are not designed for waterways where swimming or water sports are permitted. Specifications recorded during calm wind conditions.

Install all electrical equipment in accordance with Article 680 of the National Electrical Code and all local codes. Vertex Water Features reserves the right to improve and change our designs and/or specifications of our fountains without notice or obligation.

© 2005 Vertex Water Features



Vertex Water Features

Lake Aeration Systems & Floating Fountains

2100 NW 33rd Street / Pompano Beach, FL 33069

(800) 432-4302 / Fax (954) 977-7877

www.vertexwaterfeatures.com / e-mail: info@vertexwaterfeatures.com