



# Vertex Water Features

Lake Aeration Systems & Floating Fountains

F L O A T I N G F O U N T A I N S



## PODJET™

When maximum height is desired, the PodJet series meets the need. An eye-catching column of foaming water from 4" to 8" in diameter and in heights of up to 50 feet, the PodJet allows the freedom to select the perfect look for any lake.

Powered by a U.L. listed heavy-duty submersible turbine pump, the PodJet standard equipment includes a complete U.L. listed control panel.

All fountain components are fully waterproof and made of the finest corrosion resistant materials to provide years of dependability and high performance.

## FEATURES

### FLOTATION

- ◆ U.V. resistant rotocast unit
- ◆ Four seamless, water-tight compartments for ballast
- ◆ Brass fillplugs
- ◆ 5-year warranty

### CONTROL PANEL

- ◆ U.L. listed per National Electrical Code
- ◆ Weatherproof steel enclosures

### CABLE

- ◆ STW-A rated, U.L. listed underwater cable

### PUMPS

- ◆ 1 & 2 HP units feature cast bronze Peabody Barnes submersibles
- ◆ 5 HP and up use high performance submersible turbines
- ◆ Franklin stainless steel sealed motors

### NOZZLES

- ◆ Brass/bronze pod with multiple CenterJets™ machined into a single sprayhead

### CORROSION RESISTANT

- ◆ Brass/bronze nozzles
- ◆ Rotocast float
- ◆ Stainless steel frame and fastenings
- ◆ Bronze/copper lights

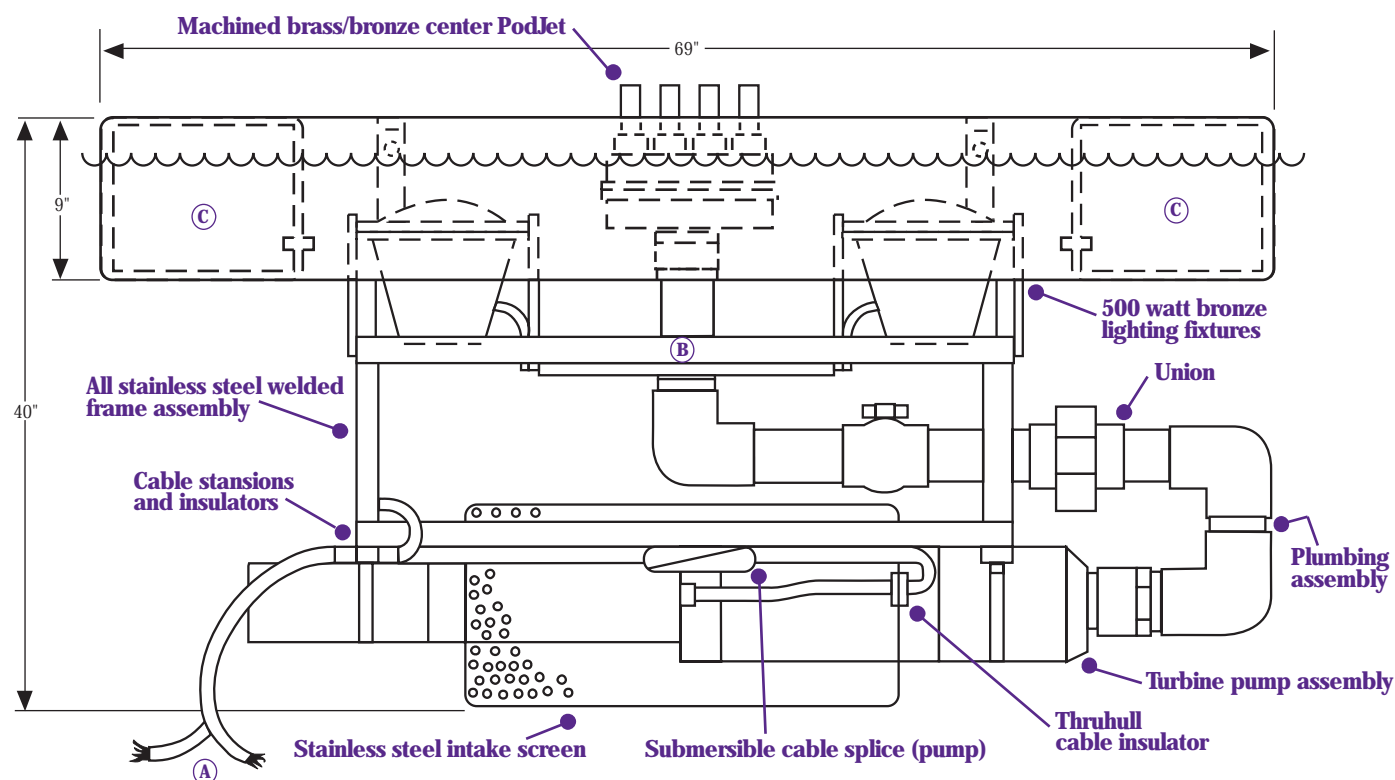
### LIGHTS

- ◆ Cast bronze/copper housing
- ◆ Stainless steel brackets
- ◆ Neoprene gaskets
- ◆ Tempered lenses
- ◆ Bronze/stainless steel lens protectors

### BENEFITS TO LAKE

- ◆ Aesthetics — beautifies waterway
- ◆ Increases property value and quality of community
- ◆ Adds decor to community
- ◆ Assists in aeration of lake system, aiding in fish dynamics
- ◆ Through agitation, prevents aggregation of planktonic algae on the surface and helps in reduction of mosquito larvae

# PODJET™



A	STW-A submersible cable (pump & lights)
B	Bronze submersible junction box (lights)
C	(4) separate ballast compartments with brass fill plugs

## DISPLAY SPECIFICATIONS

HP	HT	DIA.	WIDTH	# LIGHTS	TOTAL WATTAGE	AVAIL. PHASE
1	15'	4"	15 (3/16")	1	500w	1
2	22'	4"	15 (3/16")	2	1000w	1
5	30'	8"	10 (3/8")	3	1500w	1,3
7.5	35'	8"	10 (3/8")	4	2000w	1,3
10	45'	8"	8 (1/2")	4	2000w	1,3
15	50'	8"	8 (1/2")	5	2500w	1,3

## LIGHTING SPECS

Total Wattage	500	1000	1500	2000	2500	3000	3500	4000
AMP Draw	5	10	15	20	25	30	35	40

## PUMP AMPERAGE (208V MOTORS AVAILABLE)

HP	230v1Ø	230v3Ø
1	7	-
2	14	-
5	28	17
7.5	42	25
10	51	32
15	72	47

Because of the electric equipment involved, floating fountains are not designed for waterways where swimming or water sports are permitted. Specifications recorded during calm wind conditions.

Install all electrical equipment in accordance with Article 680 of the National Electrical Code and all local codes. Vertex Water Features reserves the right to improve and change our designs and/or specifications of our fountains without notice or obligation.

© 2005 Vertex Water Features



**Vertex Water Features**

Lake Aeration Systems & Floating Fountains

2100 NW 33rd Street / Pompano Beach, FL 33069

(800) 432-4302 / Fax (954) 977-7877

www.vertexwaterfeatures.com / e-mail: info@vertexwaterfeatures.com